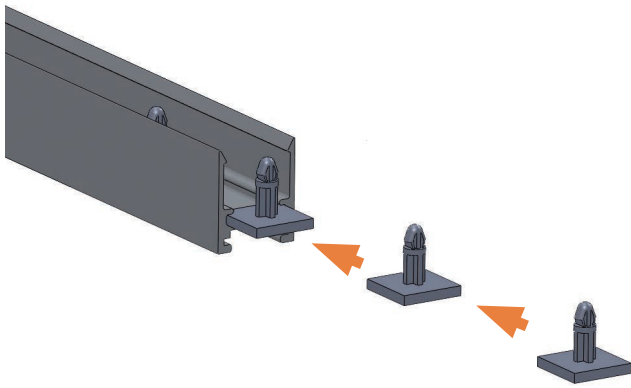


# Rectangular Profiles

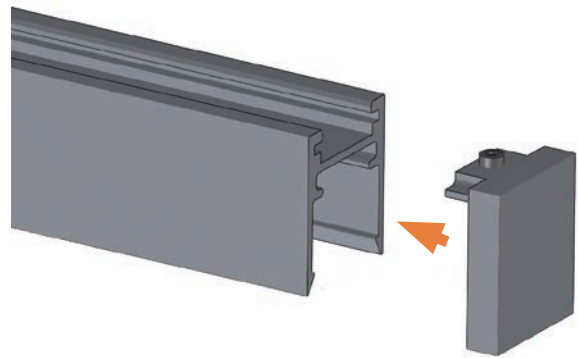
Assembly Instruction





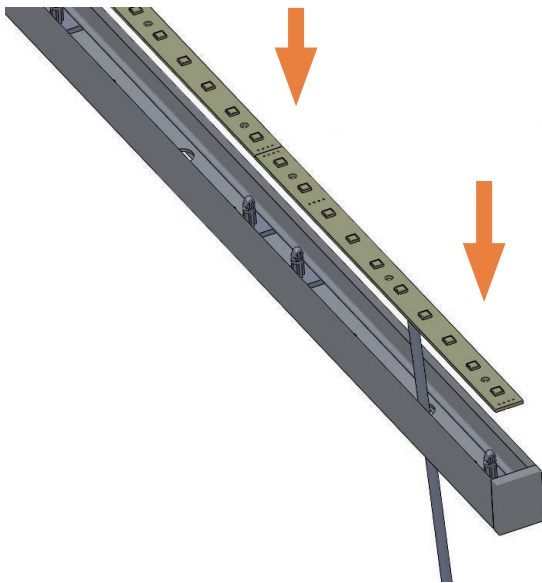
**Step 1**

Insert PCB holders in guidance slide  
(Quantity: two per board).



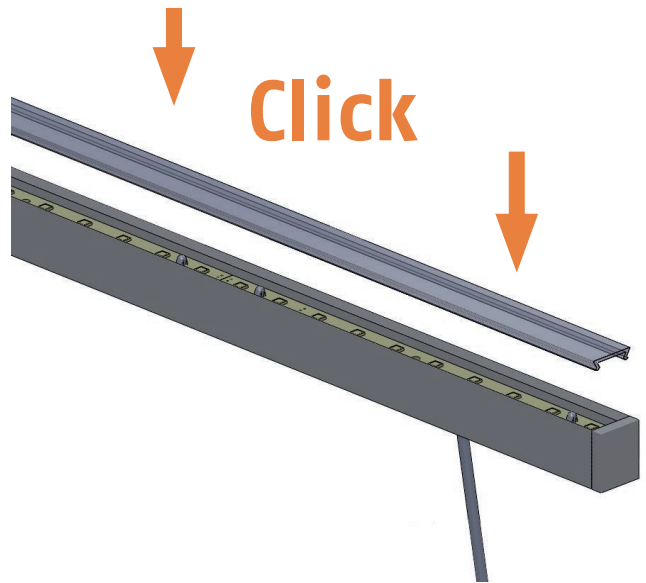
**Step 2**

Screw head ends.



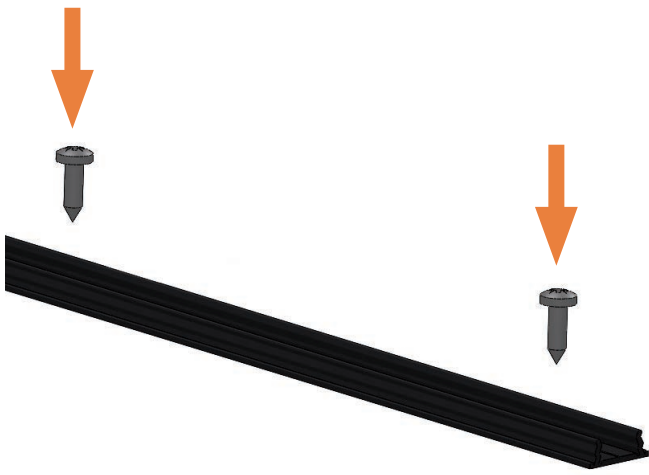
**Step 3**

Cabling and attach the boards. Lead cable through the hole.



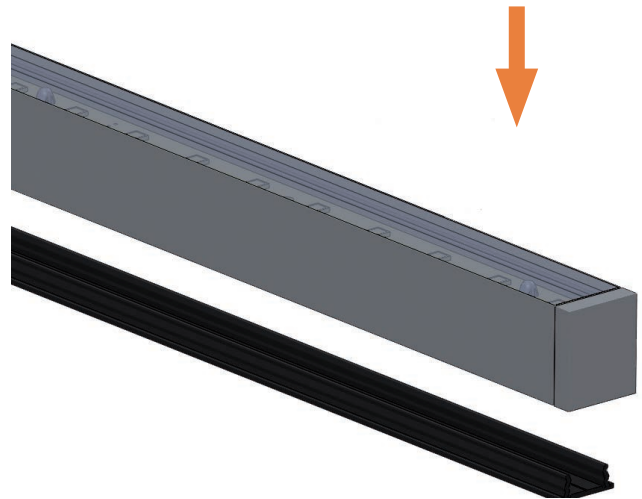
**Step 4**

Clipping cover.



**Step 5**

Screw fixing rail.



**Step 6**

Put on luminaire. Finished.

---

## **Why Schnick Schnack Systems?**

As installation times become increasingly shorter the complexity of systems simultaneously increases as do the requirements of customers.

We are a supplier who delivers high-quality reliable systems – under tight deadline constraints that are not only quick to install but also simple to operate and service.

## **Schnick-Schnack-Systems GmbH**

Mathias-Brüggen-Straße 79  
50829 Cologne (Germany)

Phone +49 (0) 221/99 2019-0  
Fax +49 (0) 221/16 85 09-73

[info@schnickschnacksystems.com](mailto:info@schnickschnacksystems.com)  
[www.schnickschnacksystems.com](http://www.schnickschnacksystems.com)

© 2016 Schnick-Schnack-Systems GmbH

Version July 2016: All technical data and the weight and dimension information were carefully created – errors reserved. Any colour deviations are printing-related.

We reserve the right to make changes that serve further improvement.